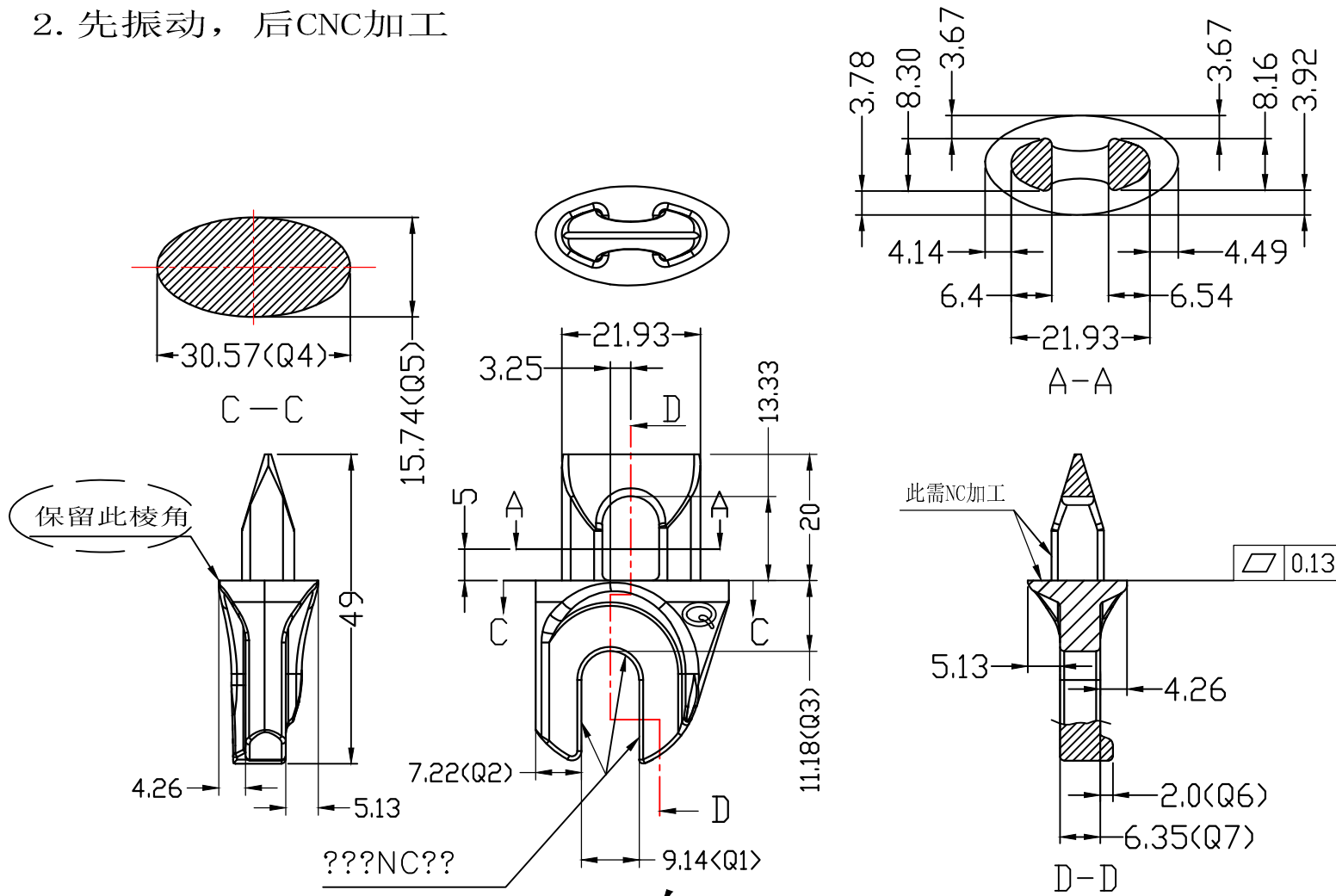


注:1. 此图谨供参考, 加工应以3D为准  
2. 先振动, 后CNC加工

检验标准

??	尺寸公差
Q1	9.14 <sup>+0.1</sup> <sub>-0.0</sub>
Q2	7.22±0.1
Q3	11.18±0.1
Q4	30.57±0.1
Q5	15.74±0.1
Q6	2.0±0.2
Q7	6.35±0.1



右 左右对称

????	
*	±1.5
0.*	±0.5
0.**	±0.1
??	±1.0°

????????(07.07.12)?????

PRODUCT	???	UNIT	mm	DRAWN BY	???	08.03.24	INDENTATION	HRB52	??	??	??	??	SIGN	REVISION	DATE	DESCRIPTION
RAWING NO	JD-9E-001	SCALE	1:1	CHECKED BY	???								△	????	08.03.24	??Q??
CLIENT	?? GS40-L/R	MASTERIAL	???	APPROVED BY	???								△			



JIANGDING,HANDWARE.MANUFACTURE.CO.,LTD