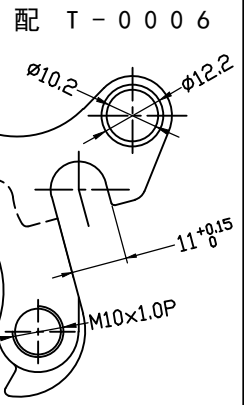
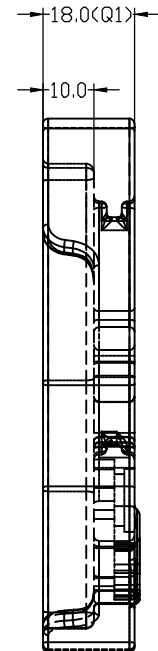
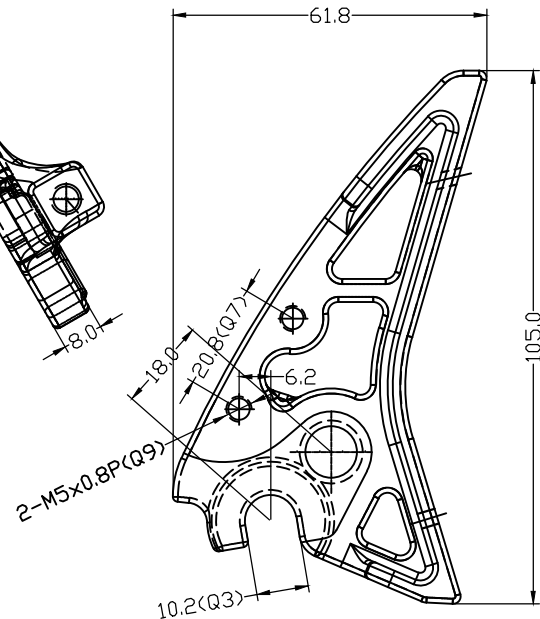
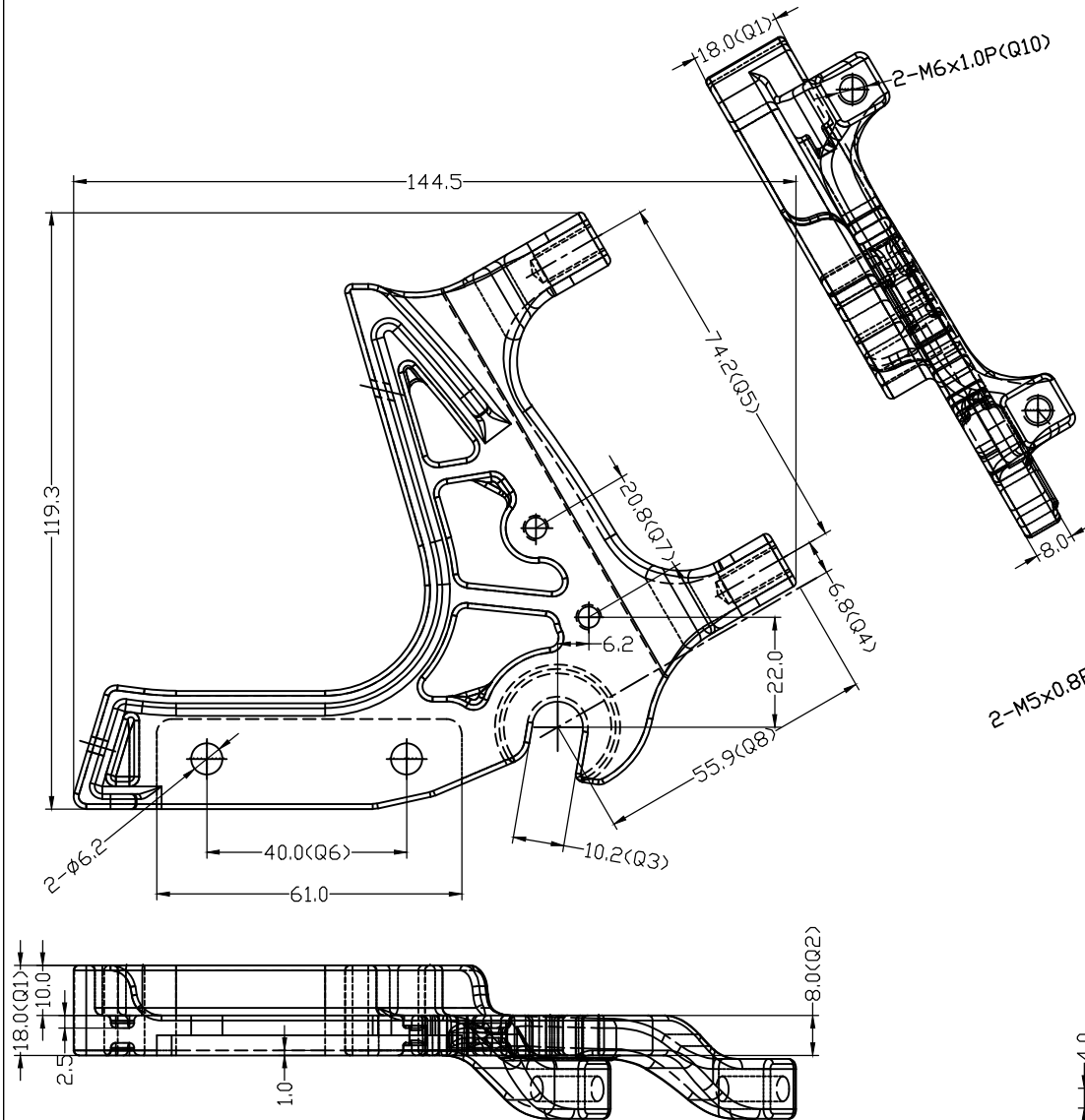
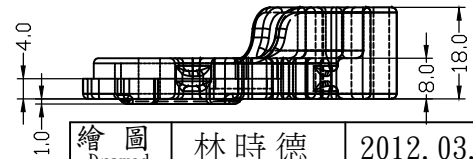
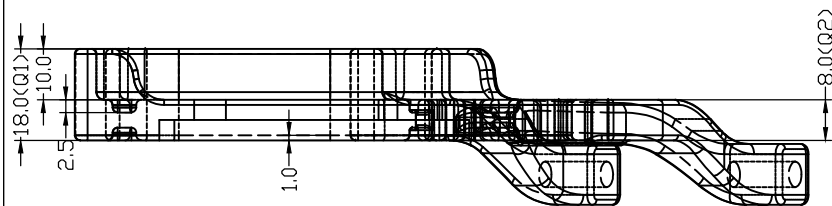


A3



檢驗標準

	尺寸公差
Q1	18.0±0.1
Q2	8.0±0.1
Q3	10.2±0.1
Q4	6.8±0.1
Q5	74.2±0.1
Q6	40.0±0.1
Q7	61.0±0.1
Q8	55.9±0.1
Q9	M5×0.8P
Q10	M6×1.0P



Potor size : 160mm

繪圖 Drawn	林時德	2012. 03. 02	處理 FINISH			
校對 Checked		材質 Material	AL6061	比例 Scale	1:1	
審核 Approved		產品稱 Product	爪	單位 Unit	mm	>1-4 ±0.1
		製圖號 Drawing No:	JD-9D-0214	版 Version		>16-63 ±0.3
		客編號 Customer No:				>63-250 ±0.5
						角度公差 ANGULAR